

SUMMER 2005

From seeing plants and animals you never knew existed, to learning new skills, finding out more about Darwin and the countryside he lived and worked in, there are lots of things to do and see...

1 Brilliant Biodiversity at High Elms Country Park

Saturday 21st May - 2 - 4pm

An afternoon of family activities at High Elms with experts from the Natural History Museum (NHM). Meet at the Nature Centre.

Pond lives: look beneath the surface at the lives of pond animals and see if you can find the same algae found at High Elms 150 years ago.

Woodland Soil Wonders: Discover some of the hundreds of animals living hidden lives in woodland soil. Some of the species were first discovered and named at High Elms by Darwin's protégée, John Lubbock, who also lived here.

Beetles in the Bushes: Be enthused like Darwin, about beetles, encounter some of the 4000 different beetle species in Britain with an expert and go home and look for beetles in your backyard.

Marvellous Meadows: Join botanists looking at plants and minibeasts of the meadows and how they live together.

Booking essential.

Pictured above: top left - Ground Beetle, top right - Bumble Bee on Red Clover, middle right - Collembola sp, bottom right - Blue-green Alga



2 Flowers of the Fields

Monday 6th June - 2 - 4pm

Come and learn the method behind detailed botanical surveying as botanists including specialists from the Natural History Museum resurvey meadows within the Down House Estate surveyed by Charles Darwin 150 years ago this month. **Booking essential.**

Pictured above: left - Five-spot Burnet Moth on Knapweed, middle - Yorkshire Fog Grass, right - Hoverfly (sunfly) on Yarrow

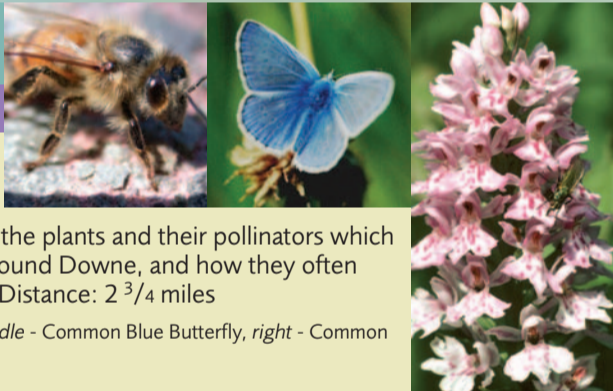


3 Downe Walk

Sunday 12th June - 2pm

Meet at 2pm outside the entrance to St. Mary's Church, Downe village for a guided walk looking at some of the plants and their pollinators which Darwin studied in the countryside around Downe, and how they often depend on one another for survival. Distance: 2 3/4 miles

Pictured above: left - Honey Bee Worker, middle - Common Blue Butterfly, right - Common Spotted Orchid

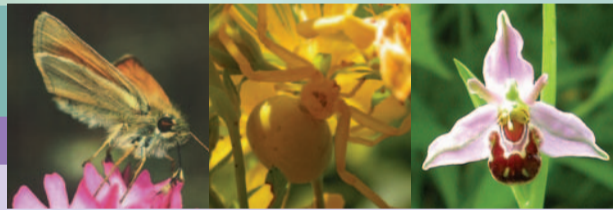


4 Open Day at Downe Bank Nature Reserve

Saturday 18th June

Visit this beautiful Kent Wildlife Trust Reserve, Darwin's 'Orchid Bank', and learn about orchids, bees, wasps, butterflies and other invertebrates and how to identify them, with experts including specialists from Kent Wildlife Trust and the NHM (2-4pm). There will also be a demonstration of macro-photography techniques. Short guided walks at 10.30am, 11.30am and 12.30pm. Parking available at Cudham Recreation Ground, walk from there or for the less mobile a minibus or landrover will take you to the site at times to be arranged on booking. On site parking strictly limited to the less mobile, please ring Heritage and Urban Design. **Booking essential.**

Pictured above: left - Skipper Butterfly, middle - Crab Spider, right - Bee Orchid

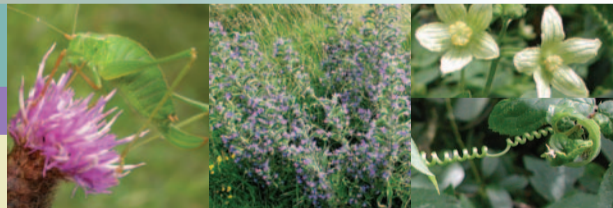


5 Cudham Walk

Saturday 9th July - 10.30am

Meet at Cudham Recreation Ground, off Cudham Lane North, for a guided walk visiting places where Charles Darwin studied wildlife and look at some of the plants and animals he referred to in his books, notebooks and letters. Distance: 3 3/4 miles

Pictured above: left - Speckled Bush Cricket on Knapweed, middle - Viper's Bugloss, right - White Bryony flowers and tendrils



6 The Great Glow Worm Hunt

Saturday 30th July - 9pm

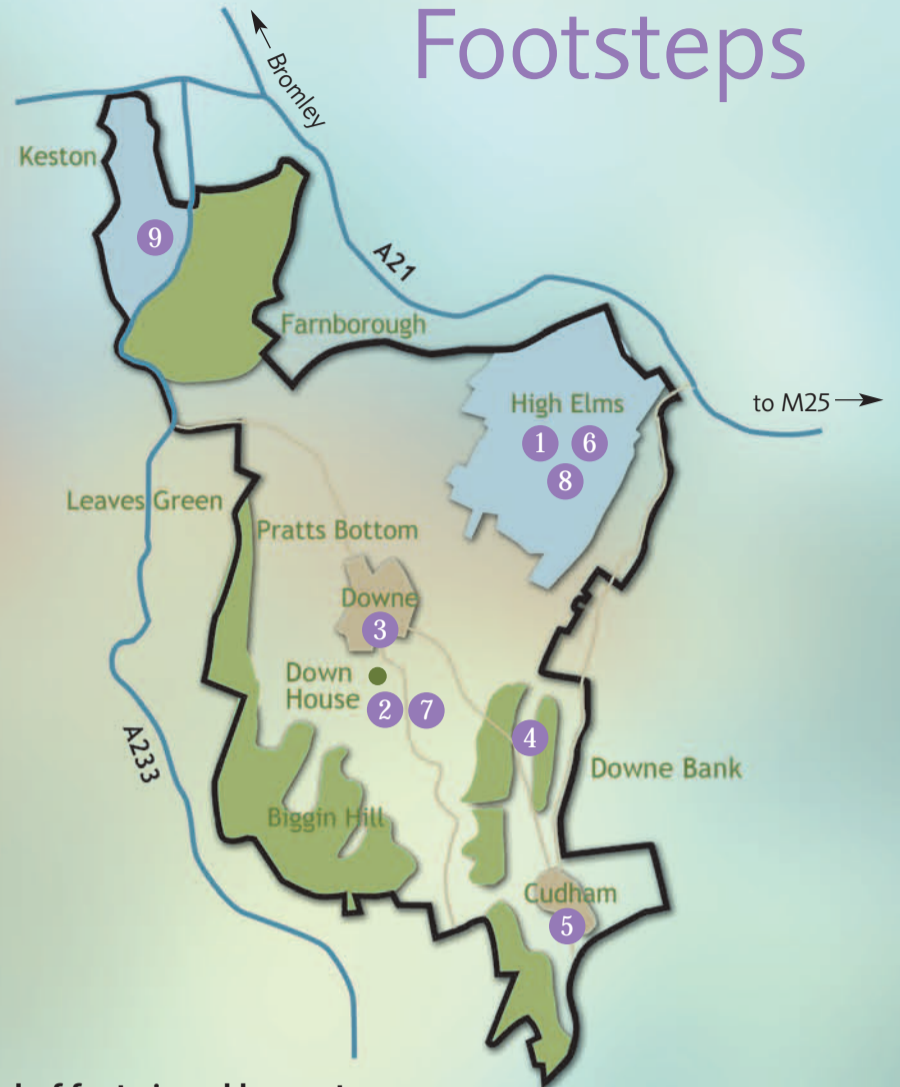
Meet at 9pm at High Elms Nature Centre. Learn how to find this fascinating beetle, help us to discover where they live and how many there are in High Elms Country Park. Please bring a torch and wear suitable footwear.

Booking essential. (Phone 01689 862815).

Pictured above: left - Garden Tiger Moth, right - Glow Worms



Exploring in DARWIN'S Footsteps



See overleaf for train and bus routes to the proposed site.

For more information including about disabled access or to book an event, please contact Bromley's Heritage and Urban Design (HUD) on 020 8461 7646 e-mail: conservation@bromley.gov.uk

7 Wild Night

Saturday 3rd September - 7pm

Meet 7pm Down House Car Park. See how a moth trap is set up by a moth expert from the Natural History Museum, then join a bat enthusiast looking and listening for bats. Return to see which moths have been caught. Please bring a torch and wear suitable footwear. Should finish by 10pm. Numbers limited.

Booking essential.

Pictured above: left - Buff Arches Moth, right - Double Square-spot Moth, bottom - Swallow-tailed Moth



8 Autumn Spectacular at High Elms Country Park

Saturday 17th September

Meet at High Elms Nature Centre.

Incredible Earthworms: the subject of a book by Darwin, see how many different species live at High Elms and learn about their lifestyles with earthworm experts from the University of Central Lancashire. Demonstrations from 2 - 4pm.

Superb slime moulds: learn about these amazing organisms with one of very few experts in the country. Demonstrations and guided walks from 10.30 - 4pm.

Spiders Safari: Demonstrations and a spider foray with London's spider recorder. 2 - 4pm.

Terrific Trees: Take a thoughtful look at trees with Natural History Museum scientists and discover how they evolved and some of their relationships with other plants and animals. 2 - 4pm.

Booking essential.

Pictured above: left - Common Earthworm, top right - Harvestman Spider, right - Spindle Berries



9 Keston Walk

Sunday 18th September - 2pm

Meet at Keston Ponds Car Park, Westerham Road, Keston for a guided walk looking at places and wildlife familiar to Charles Darwin and how some of them have changed. Distance: 3 miles

Pictured above: left - Holly Berries, middle - Saffron Milk-cap Fungus, right - Saffron Milk-cap Fungus Gills

