

SUMMER 2006

● Guided Walks

● Surveying

● Events

Why not join the free events in the nominated World Heritage Site this summer and find out more about Darwin and the wildlife he studied in and around Downe. Choose from family events, learning new skills, walks with experts and working with Natural History Museum scientists. Please note: **Booking Essential for all events.** Please contact the nominated World Heritage Site team on 020 8313 4249 or e-mail conservation@bromley.gov.uk

1 Terrific Tiles

Sunday 23rd April - 2 - 4pm

An afternoon of craft activities at Scadbury TrEE Centre with Kim Parker. Find out more about the work of Charles Darwin and John Lubbock in the nominated World Heritage Site and make tiles for a new display at the High Elms 'BEECHE' Centre celebrating some of the things they did and animals and plants they studied.

Booking essential.

Pictured right: Tiles made by schoolchildren in Bromley



2 Dusk Patrol

Friday 12th May - 8 till late

Join Kent Wildlife Trust's dusk patrol to discover who wakes up when the lights go down. For more information and to book a place phone 020 8313 4249. **Booking essential.**

Pictured right: Wood mouse



3 Brilliant Bats

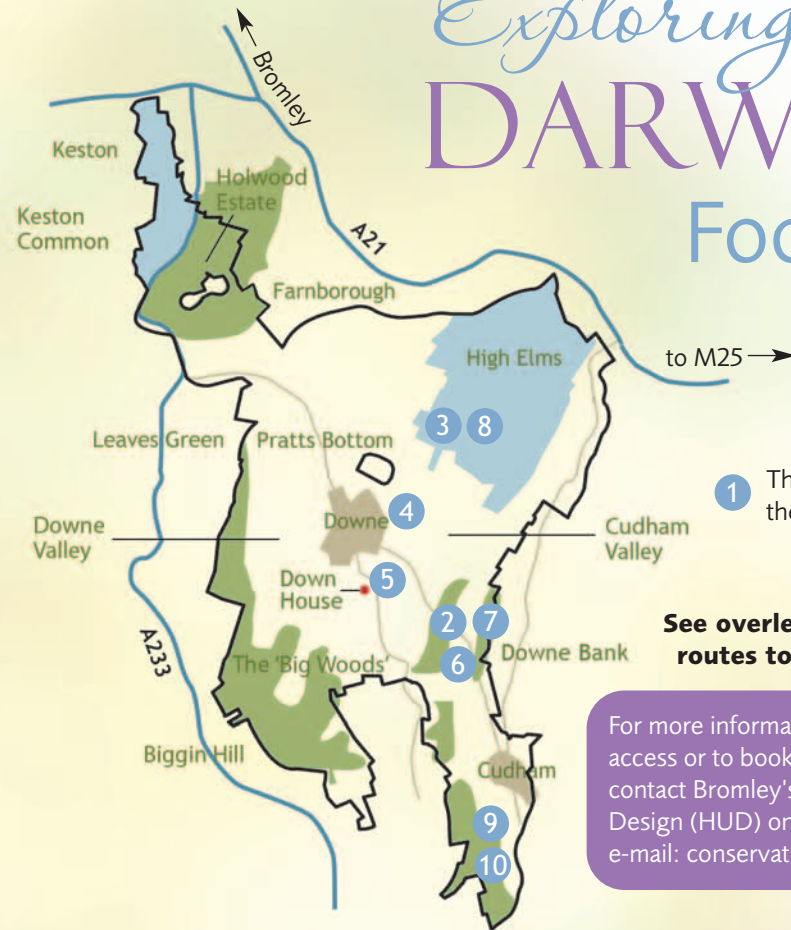
Friday 19th May - 8.30pm

Discover how bats are adapted for their environment. A walk in the proposed World Heritage Site with bat expert Ishpi Blatchley listening and looking for bats. Please bring a torch and wear suitable footwear. May be cancelled if weather unsuitable. **Booking essential** as numbers limited.

Pictured right: Bat



Exploring in DARWIN'S Footsteps



1 This event will be held at the Scadbury TrEE Centre

See overleaf for train and bus routes to the nominated Site

For more information about disabled access or to book an event, please contact Bromley's Heritage and Urban Design (HUD) on 020 8313 4249 e-mail: conservation@bromley.gov.uk

7 Flowers of the Field

Wednesday 5th July - 10.30am - 4pm

A training day with botanist Joyce Pitt. Learn how to identify meadow flowers and some of the grasses that even Darwin struggled with! Please bring a packed lunch, and wear clothing suitable for fieldwork. **Booking essential.**

Pictured right: Sweet Vernal Grass, Chalk Milkwort



8 Great Glow Worms

4 Beneficial Bees

Sunday 21st May - 2 - 4pm

Darwin was very interested in how different species of bee were able to pollinate different flowers. There are about 250 species of wild bee living in the UK. Discover more about some of the species which live in the nominated World Heritage Site, and how to attract some of these harmless and beneficial wild bees to your garden. A family event with local bee enthusiast Marc Carlton. **Booking essential.**



Pictured right: Mining Bee (*Andrena* sp.), Left: Bee Homes

5 Brainy Bees

Tuesday 6th June - 10.30am - 4pm

More about bees: A training event. Learn how to identify bees with Stuart Hine of the Natural History Museum. A talk followed by some surveying. Meet Down House Car Park. Please bring a packed lunch and wear clothing suitable for fieldwork. **Booking essential.**



Pictured right: Buff-tailed Bumble Bee

6 Downe Bank Open Day

Sunday 18th June - 10.30am - 3.30pm

Visit this beautiful Kent Wildlife Reserve where Charles Darwin carried out many studies. Guided Walks at 11am and 2pm looking at the plants and animals. Very limited disabled parking only at the reserve. Transport available from Cudham Recreation Ground at 10.30am (returning 12.30pm) and 1.30pm (returning 4pm). **Booking essential.**

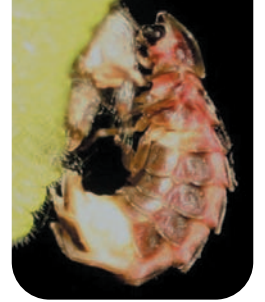


Pictured top right: Bug, Bottom right: Birdsfoot Trefoil, Middle right: Germander Speedwell, Bottom: Beetle (*Oedemera nobilis*)

Saturday 15th July - 9.30pm

Meet at Cuckoo Wood car park for a walk to discover some of these fascinating little animals and help to find out where they live in the nominated World Heritage Site. Please wear suitable footwear and bring a torch. Part of Bromley's Walking Festival. **Booking essential.**

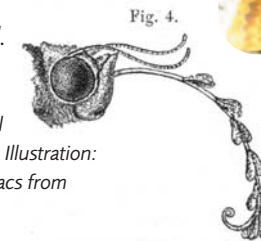
Pictured right: Female Glow Worm



9 Marvellous Moths

TBC - Please telephone for details

Join Geoff Martin of the Natural History Museum as he sets up and monitors a moth trap. Check to see, like Darwin, if any of the moths have been pollinating orchids. Please bring a torch and wear suitable footwear. For more information and to book a place phone 020 8313 4249. **Booking essential.**



Pictured top right: Ox-eye Daisy with Mother Shipton Moth, Bottom right: Small Magpie Moth, Middle: Yellow Shell Moth, Illustration: Head and proboscis of moth with pollen sacs from pyramidal orchid attached

10 More Magnificent Minibeasts

TBC - Please telephone for details

Join scientists from the Natural History Museum as they survey minibeasts and plants in the proposed World Heritage Site this summer. For more information and to book a place phone 020 8313 4249. **Booking essential.**



Pictured right: Meadow Grasshopper, Middle: Crab Spider

The London Wildlife Trust (LWT) and the Natural History Museum also plan to run wildflower identification courses in the nominated World Heritage Site on some Saturdays during the summer. To find out more details, call LWT on 020 7261 0447 after April 1st.